

## Outer Cape house for rent. \$1750\* a week, Sunday Noon – Sunday Noon.

**Wellfleet.** 165 Cove View Rd. Located on quiet private circle, walking distance to town beaches, 2 miles from Wellfleet town center. Available longer pro-rated \$250 a day, flexible start/end dates (\* + \$150 cleaning fee).



3 br. Cape, with generous living area and large deck, set on forested property on quiet circle. Home features 1 bedroom up, 2 bedrooms lower level (each with queen size bed) + airy sleeping loft with three full beds in attached artist's studio (right) and up circular stairs. 2 1/2 baths: 1/2 upstairs, and 2 downstairs (1 bath/shower, 1 shower down) + additional 3/4 bath (toilet/shower) in the studio. Occupancy: up to 10 people maximum.



Large deck the width of the house and overlooking secluded wooded property, with patio furniture, gas grill, and privacy provided by outer cape scrub pines and oaks.

The generous open living space is furnished with a sofa, love seat 2 recliners and an assortment of additional furniture and amenities including chairs, tables, a desk, TV/DVD player CD player. Sliding doors off of living room lead to large deck.



Left: From front of house facing deck. Right: From door to deck looking toward the front of the house. The house is filled with beautiful Cape-themed art.



Fully equipped kitchen with dining area, and second set of sliding doors onto deck. Left: kitchen and dining area from living room. Right: Kitchen.

Bedrooms

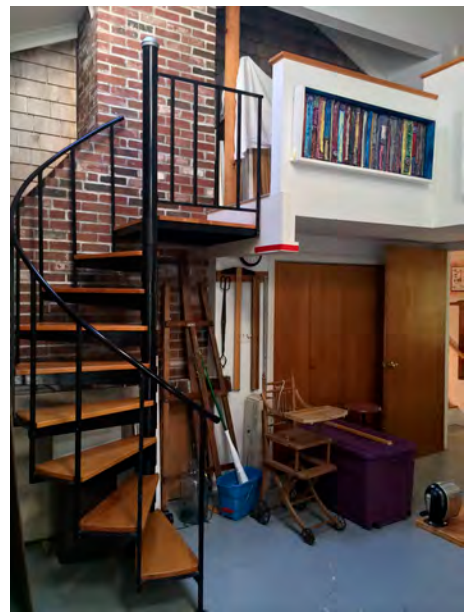


First floor bedroom (above)



Views of the two lower level bedrooms (above and below)





Sleeping loft with three full beds. Circular staircase to the sleeping loft. Below: Views of and from deck.



**Setting:** The house is situated on a double lot featuring plenty of privacy around the house and between neighboring houses.



Views of back of the house.

**Kitchen:** Full size refrigerator, stove, microwave, dishwasher, coffee pot. Fully equipped with pots and pans, dishes, serving dishes and utensils, Eating area with large table and chairs that can accommodate 8. Additional refrigerator in the basement.

**Deck:** Gas grill on the deck, deck furniture including eating area of table and chairs, beach chairs. Deck is accessible from sliding doors off of the kitchen and living room, + from studio and yard. Gas grill, table with umbrella, 6 chairs, and additional seating and tables.

**Other:** Linens and towels provided (bring your own beach/extra towels).  
Laundry with washer and dryer in basement. The house will be clean when you arrive.  
Renter is expected to leave house reasonably clean when you leave.  
Parking spaces for several vehicles out front.  
Wifi.

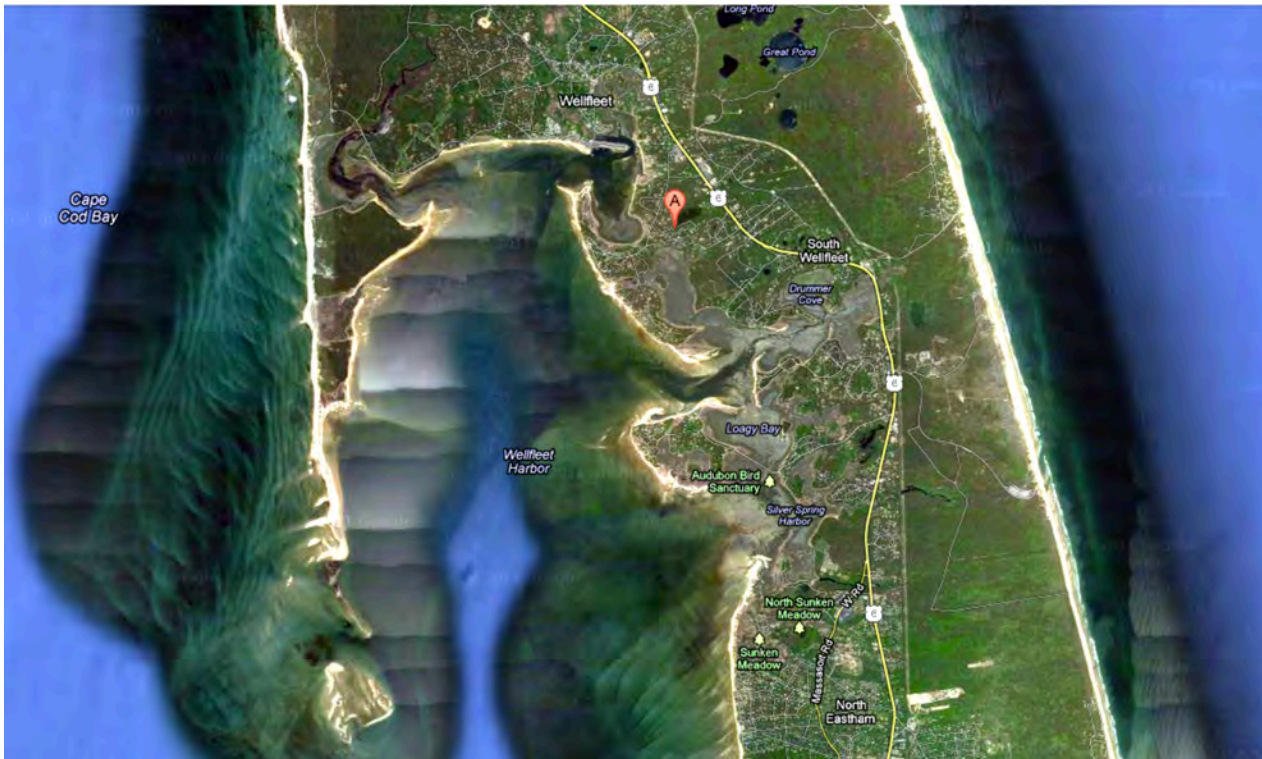
**Terms:** A deposit of ½ down reserves the house. The other half is due 14 days prior to rental date.  
Non-smoking house and deck.  
No pets.



Cove View Road is marked with "A." Several beaches in walking distance on left.

**Directions:**

- Take Rt. 6 towards Provincetown.
- Pass Eastham, South Eastham, South Wellfleet.
- Left onto Cove Rd just past the Post Office, Dunkin Donuts.
- (Turn is between 100 and 101 mile markers, after fire tower)
- Turn left onto Cove View Rd. in about ½ mile.
- 12th house (I think!) on the left (go straight at the fork).
- 50 minutes from Sagamore Bridge, an hour from Bourne Bridge (except during heavy traffic).



Left: Bay and Harbor beaches. Right: Ocean Beaches. Top center: Town ponds.

### **Beach Information**

Wellfleet Beaches: [http://www.wellfleetma.org/public\\_documents/wellfleetma\\_departments/beach](http://www.wellfleetma.org/public_documents/wellfleetma_departments/beach)  
Indian Neck Beach is about a mile walk. It is a pleasant walk (or someone can shuttle people & beach stuff, return the car to the house and walk down). Mayo Beach is close to the town pier, has free parking and is a good "kid-friendly" beach; both are "bay beaches." <http://www.wellfleet-ma.gov/beaches>

Otherwise, a parking permit/beach sticker (see chamber link) is needed to park at town beaches. A permit allows you to park at Wellfleet town beaches on the ocean, bay and several freshwater ponds. Note: the town is strict about stickers and checks cars regularly at beaches.

National Seashore beaches (<http://www.nps.gov/caco/index.htm>) are open to everyone for the price daily parking. The closest is Marconi in South Wellfleet, and Highlands Center in North Truro. Both are beautiful.

### **Wellfleet**

Wellfleet is known for its beaches, art galleries, freshwater ponds, harbor, restaurants, and biking & hiking, among other things. See the above Chamber of Commerce link for information on things to do in town.

### **Useful links**

Wellfleet: <http://www.wellfleetchamber.com/>

Also of interest:

[http://www.massaudubon.org/Nature\\_Connection/Sanctuaries/Wellfleet/index.php](http://www.massaudubon.org/Nature_Connection/Sanctuaries/Wellfleet/index.php)

<http://www.provincetown.com/>

<http://www.truro-ma.gov/>

<http://www.what.org/>

<http://www.mywellfleet.com/>

### **Seafood**

Several Wellfleet locations to purchase fresh seafood that we like.

<http://www.macsseafood.com/>

<http://www.hatchsfishmarket.com/>

<http://www.wellfleetcatch.com/>

### **Restaurants**

There are many in Wellfleet, and even more in Provincetown. Two useful links:

<http://www.wellfleetchamber.com/dining.html>

<http://ptownchamber.com/eat/>

### **Rentals**

Kayaks, etc. <http://www.jacksboatrental.com/>

Boats, etc. <http://www.baysailsmarine.com/>

### **Other Cape Cod Links**

<http://ptownchamber.com/>

<https://whalewatch.com/>

<http://www.nps.gov/caco/index.htm>

<http://www.capecodchamber.org/beaches>

### **Transportation**

Boston – Provincetown Ferry: <http://www.boston-ptown.com/>

Boston – Provincetown Flight info: <http://www.provincetown-ma.gov/index.aspx?NID=170>

Let us know if you have any additional questions!